

2025 Eureka County Delinquent Tax Auction

- This packet is to provide general information regarding the parcels being auctioned
- Additional location information can be obtained by entering the parcel number in the **Eureka County GIS Parcel Finder App** on our website
- www.Eurekacountynv.gov

- APN: 002-013-01
- CVR&F UNIT #1
- .940 Acres
- Minimum Bid: \$847.06



Taxes Due and Minimum Bid are subject to change prior to auction

- APN: 002-035-07
- CVR&F UNIT #1
- .690 Acres
- Minimum Bid: \$659.89



Taxes Due and Minimum Bid are subject to change prior to auction

- APN: 002-039-11
- CVR&F UNIT #1
- .940 Acres
- Minimum Bid: \$840.42



Taxes Due and Minimum Bid are subject to change prior to auction

- APN: 003-044-07
- CVR&F UNIT #3
- 4.580 Acres
- Minimum Bid: \$487.69



Taxes Due and Minimum Bid are subject to change prior to auction

- APN: 003-105-04
- CVR&F UNIT #4
- 4.130 Acres
- Minimum Bid: \$503.54



Taxes Due and Minimum Bid are subject to change prior to auction

- APN: 003-141-01
- CVR&F UNIT #4
- 19.97 Acres
- Minimum Bid: \$678.28



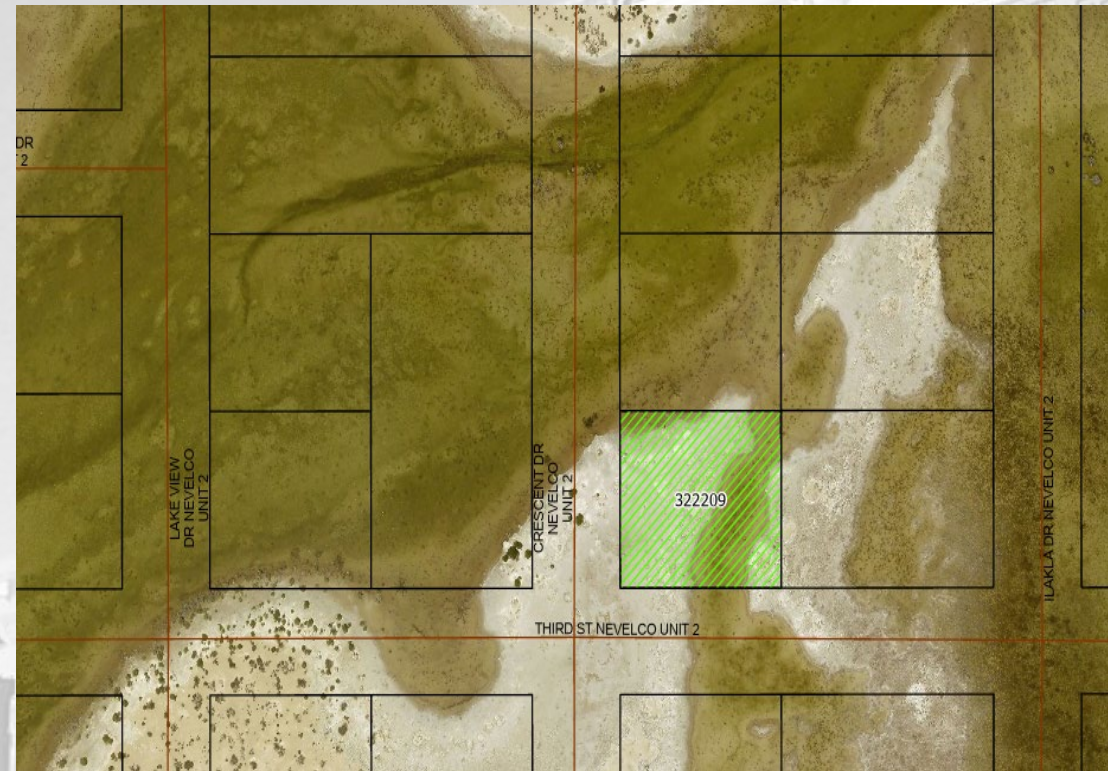
Taxes Due and Minimum Bid are subject to change prior to auction

- APN: 003-202-11
- Nevelco Inc. #2
- .250 Acres
- Minimum Bid: \$383.91



Taxes Due and Minimum Bid are subject to change prior to auction

- APN: 003-222-09
- Nevelco Inc. #2
- .250 Acres
- Minimum Bid: \$419.17



Taxes Due and Minimum Bid are subject to change prior to auction

- APN: 003-224-04
- Nevelco Inc. #2
- .250 Acres
- Minimum Bid: \$409.53



Taxes Due and Minimum Bid are subject to change prior to auction

- APN: 003-225-01
- Nevelco Inc. #2
- .370 Acres
- Minimum Bid: \$435.60



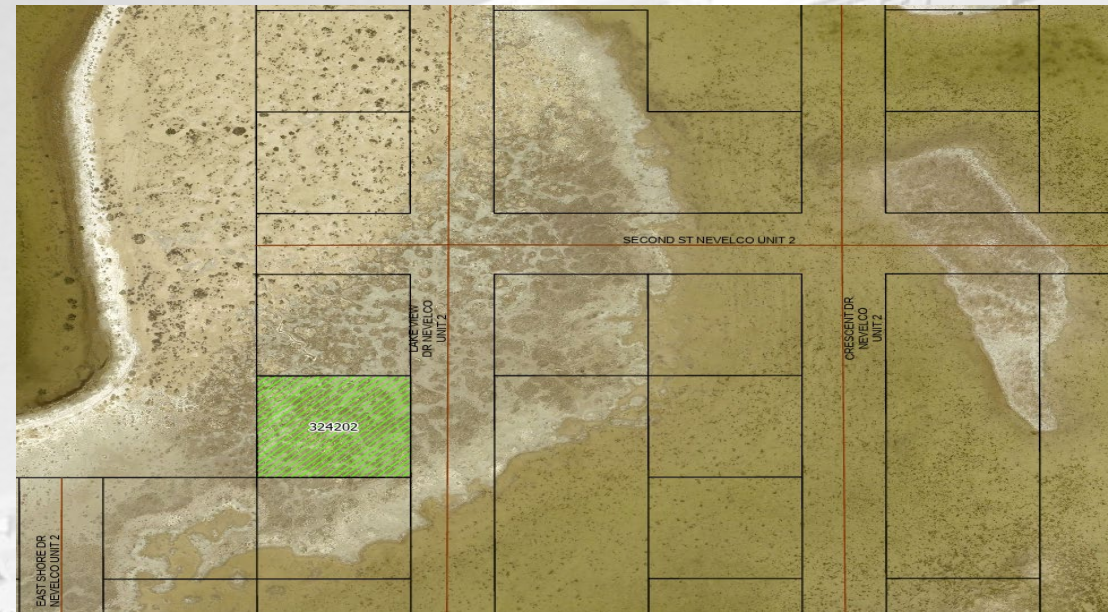
Taxes Due and Minimum Bid are subject to change prior to auction

- APN: 003-233-06
- Nevelco Inc. #2
- .250 Acres
- Minimum Bid: \$399.89



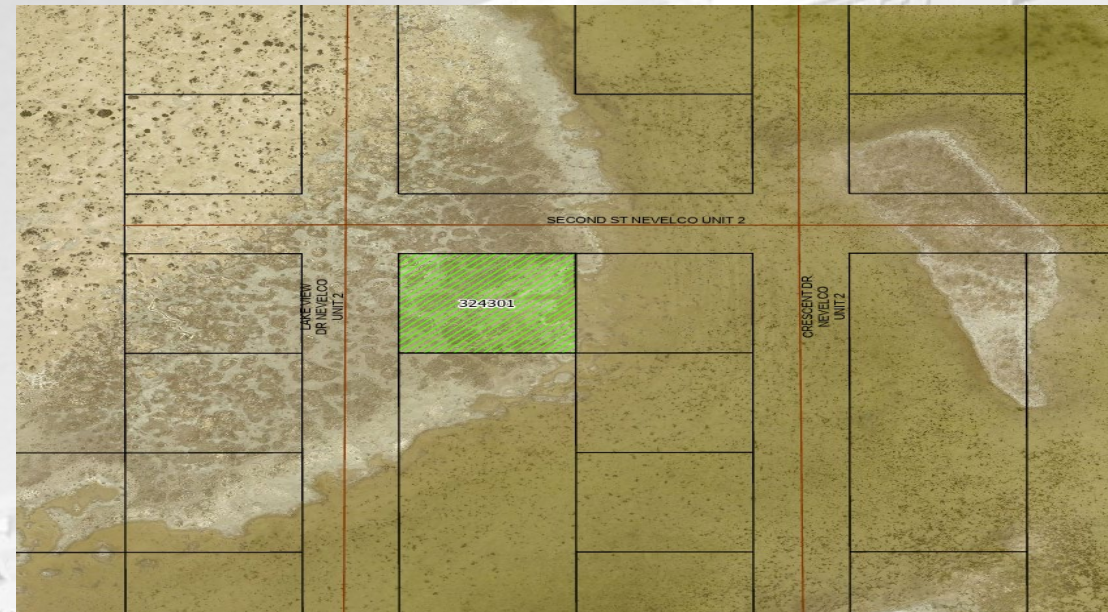
Taxes Due and Minimum Bid are subject to change prior to auction

- APN: 003-242-02
- Nevelco Inc. #2
- .250 Acres
- Minimum Bid: \$409.53



Taxes Due and Minimum Bid are subject to change prior to auction

- APN: 003-243-01
- Nevelco Inc. #2
- .250 Acres
- Minimum Bid: \$409.53



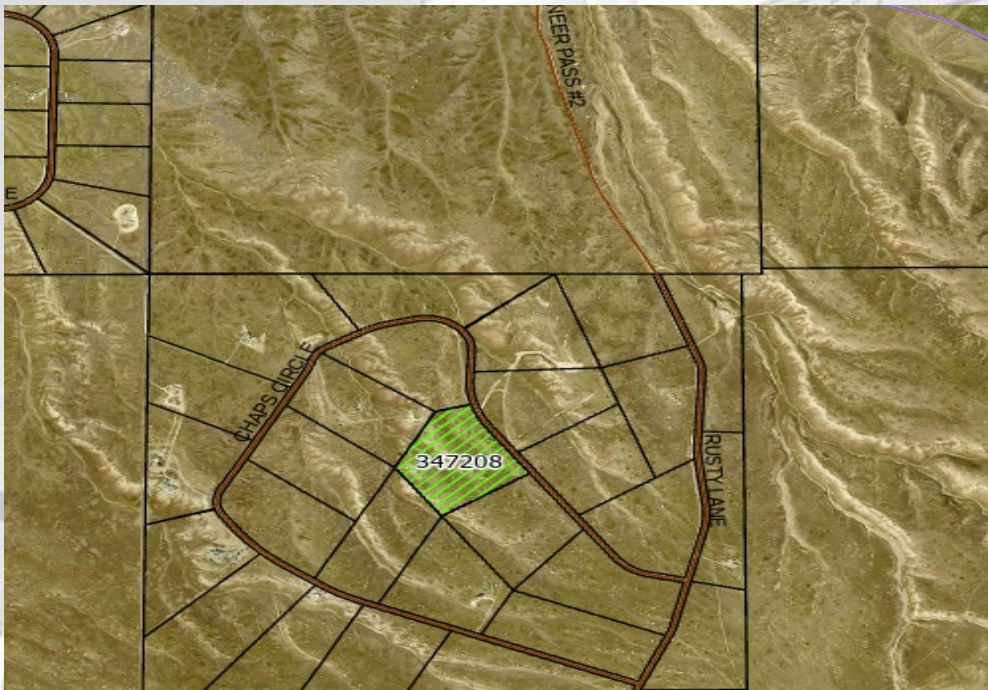
Taxes Due and Minimum Bid are subject to change prior to auction

- APN: 003-451-08
- Pioneer Pass #1,2
- 10.00 Acres
- Minimum Bid: \$747.77



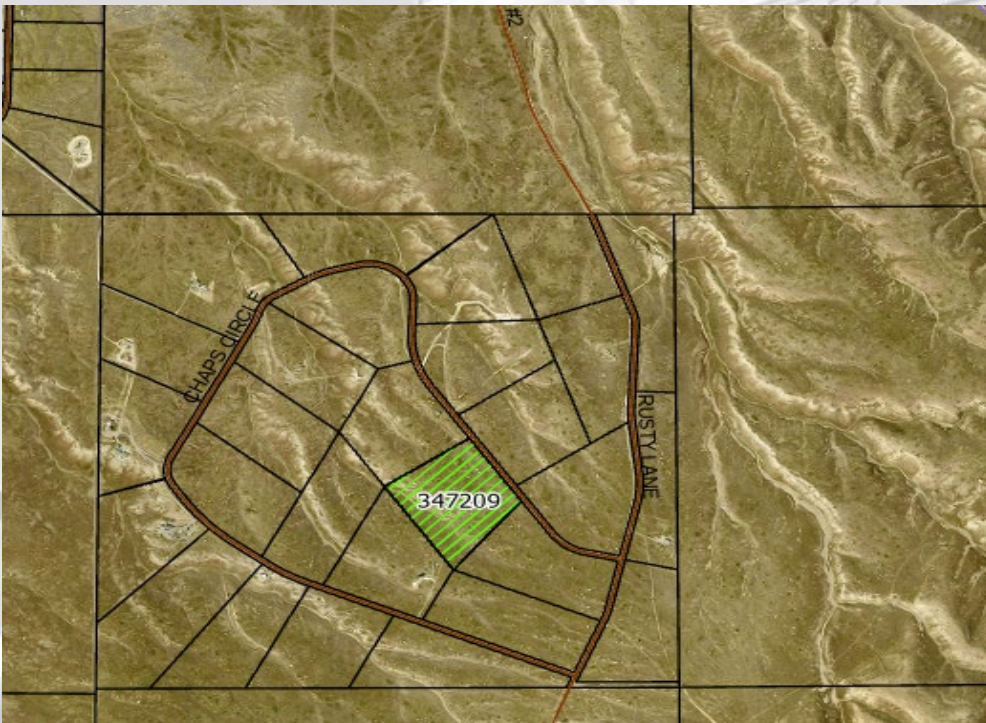
Taxes Due and Minimum Bid are subject to change prior to auction

- APN: 003-472-08
- Pioneer Pass #1,2
- 20.43 Acres
- Minimum Bid: \$1039.77



Taxes Due and Minimum Bid are subject to change prior to auction

- APN: 003-472-09
- Pioneer Pass #1,2
- 20.74 Acres
- Minimum Bid: \$867.12



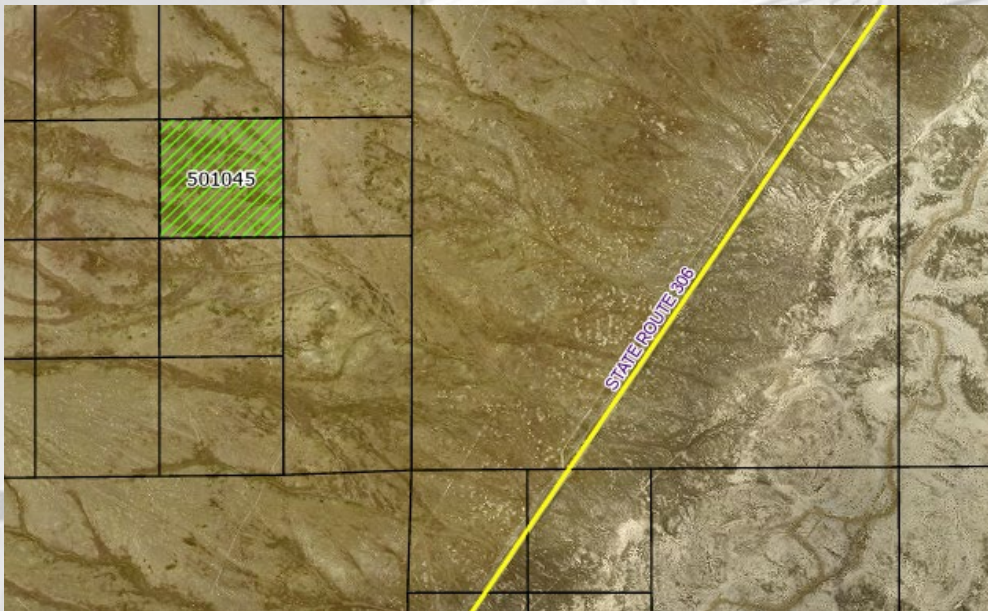
Taxes Due and Minimum Bid are subject to change prior to auction

- APN: 004-330-08
- General County
- 236.48 Acres
- Minimum Bid: \$6,656.02



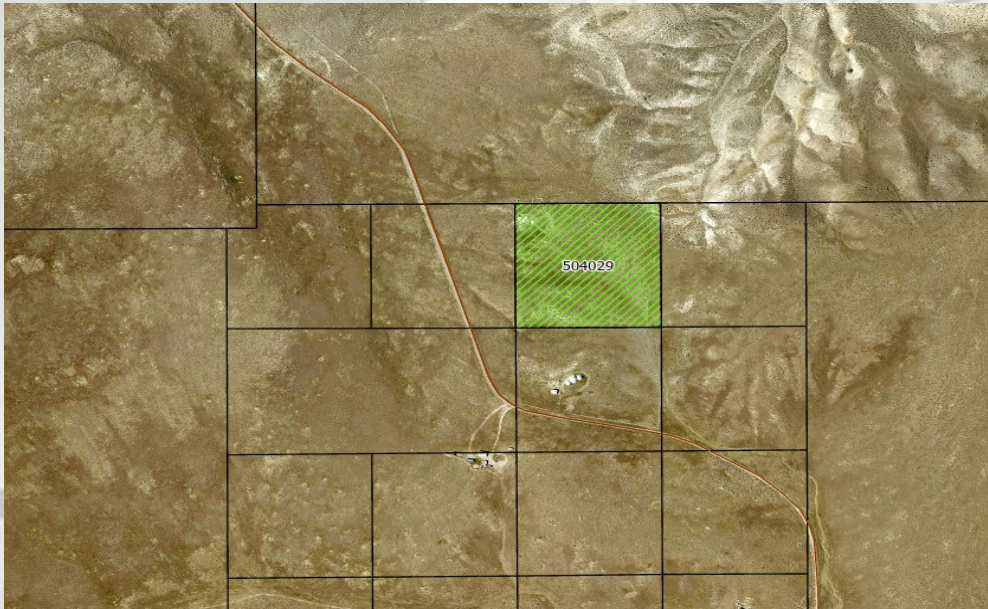
Taxes Due and Minimum Bid are subject to change prior to auction

- APN: 005-010-45
- General County
- 40.00 Acres
- Minimum Bid: \$698.32



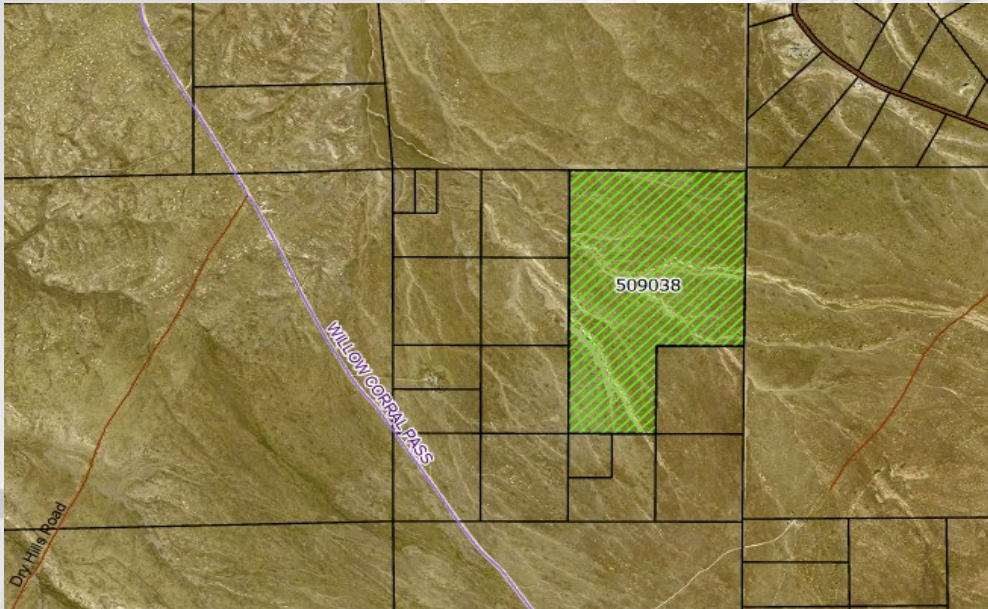
Taxes Due and Minimum Bid are subject to change prior to auction

- APN: 005-040-29
- General County
- 10.00 Acres
- Minimum Bid: \$453.63



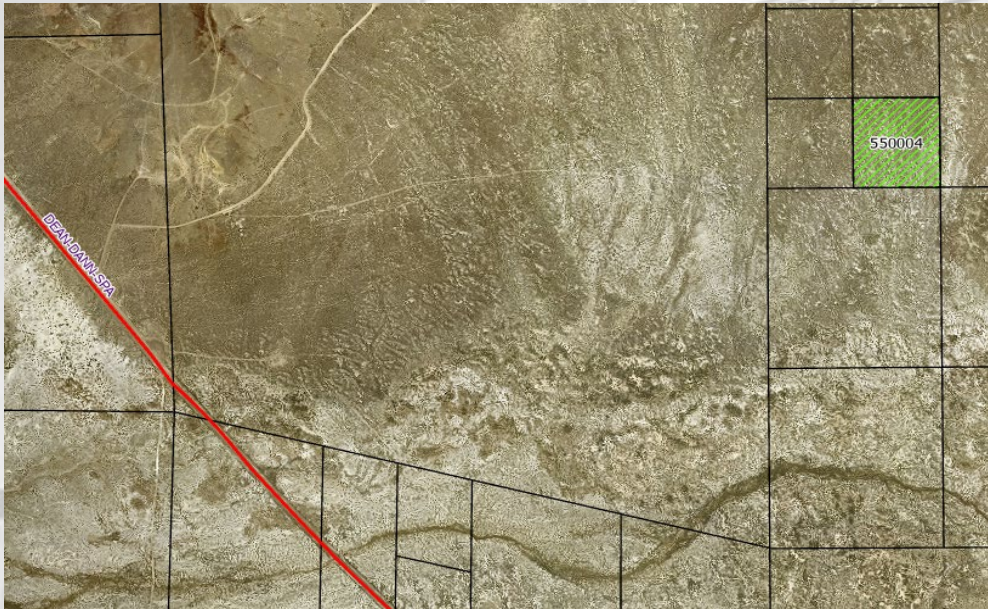
Taxes Due and Minimum Bid are subject to change prior to auction

- APN: 005-090-38
- General County
- 200.00 Acres
- Minimum Bid: \$1,383.00



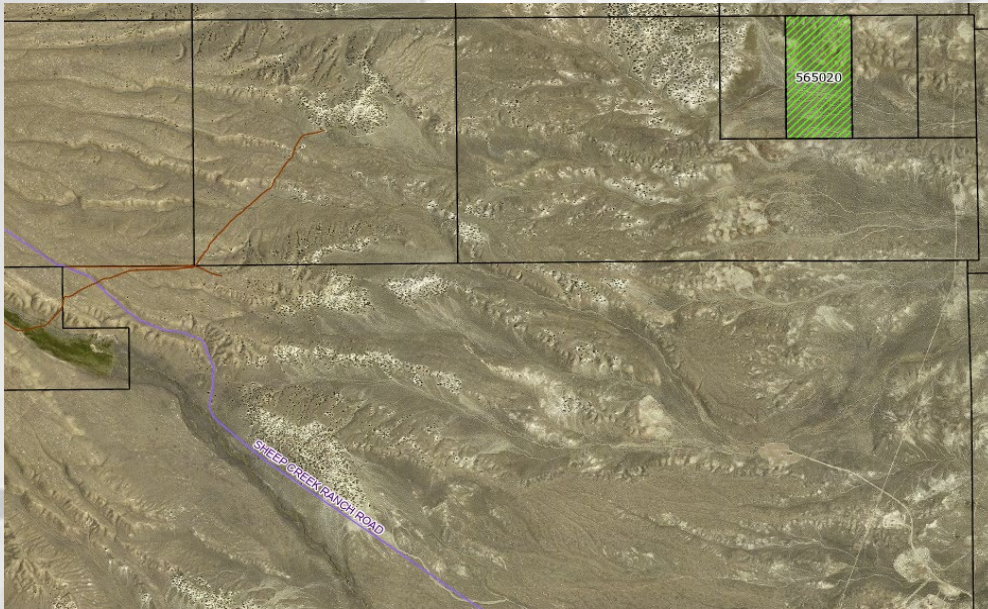
Taxes Due and Minimum Bid are subject to change prior to auction

- APN: 005-500-04
- General County
- 8.02 Acres
- Minimum Bid: \$495.89



Taxes Due and Minimum Bid are subject to change prior to auction

- APN: 005-650-20
- General County
- 80.00 Acres
- Minimum Bid: \$863.48



Taxes Due and Minimum Bid are subject to change prior to auction