

# 2025 Eureka County Delinquent Tax Auction

- This packet is to provide general information regarding the parcels being auctioned
- Additional location information can be obtained by entering the parcel number in the **Eureka County GIS Parcel Finder App** on our website
- [www.Eurekacountynv.gov](http://www.Eurekacountynv.gov)

- APN: 002-013-01
- CVR&F UNIT #1
- .940 Acres



Taxes Due and Minimum Bid are subject to change prior to auction

- APN: 002-035-07
- CVR&F UNIT #1
- .690 Acres



Taxes Due and Minimum Bid are subject to change prior to auction

- APN: 002-039-11
- CVR&F UNIT #1
- .940 Acres



Taxes Due and Minimum Bid are subject to change prior to auction

- APN: 003-044-07
- CVR&F UNIT #3
- 4.580 Acres



Taxes Due and Minimum Bid are subject to change prior to auction

- APN: 003-105-04
- CVR&F UNIT #4
- 4.130 Acres



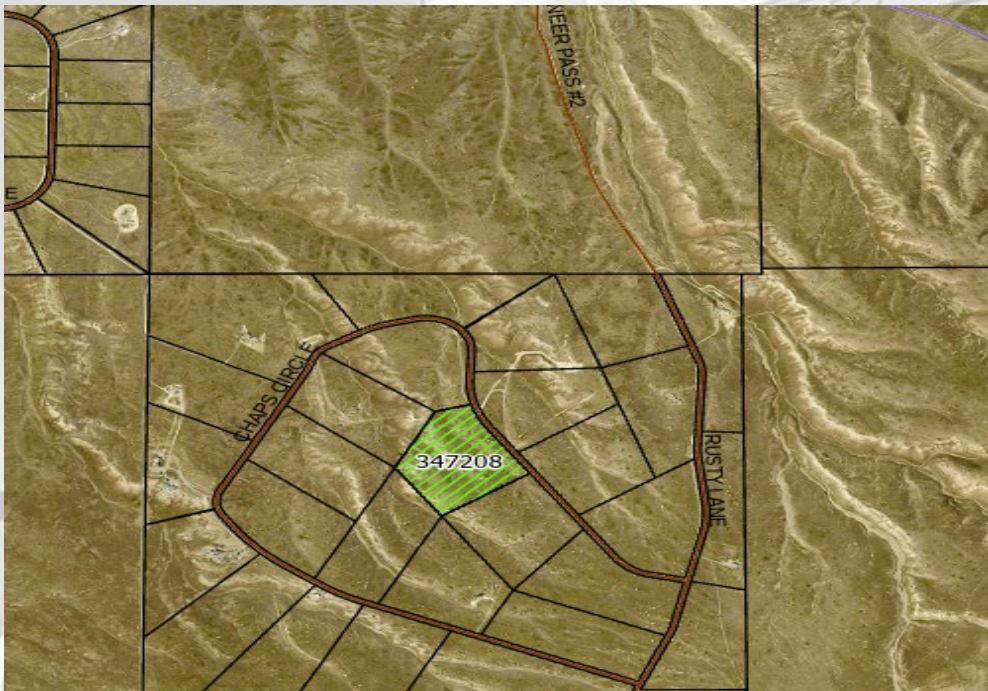
Taxes Due and Minimum Bid are subject to change prior to auction

- APN: 003-141-01
- CVR&F UNIT #4
- 19.97 Acres



Taxes Due and Minimum Bid are subject to change prior to auction

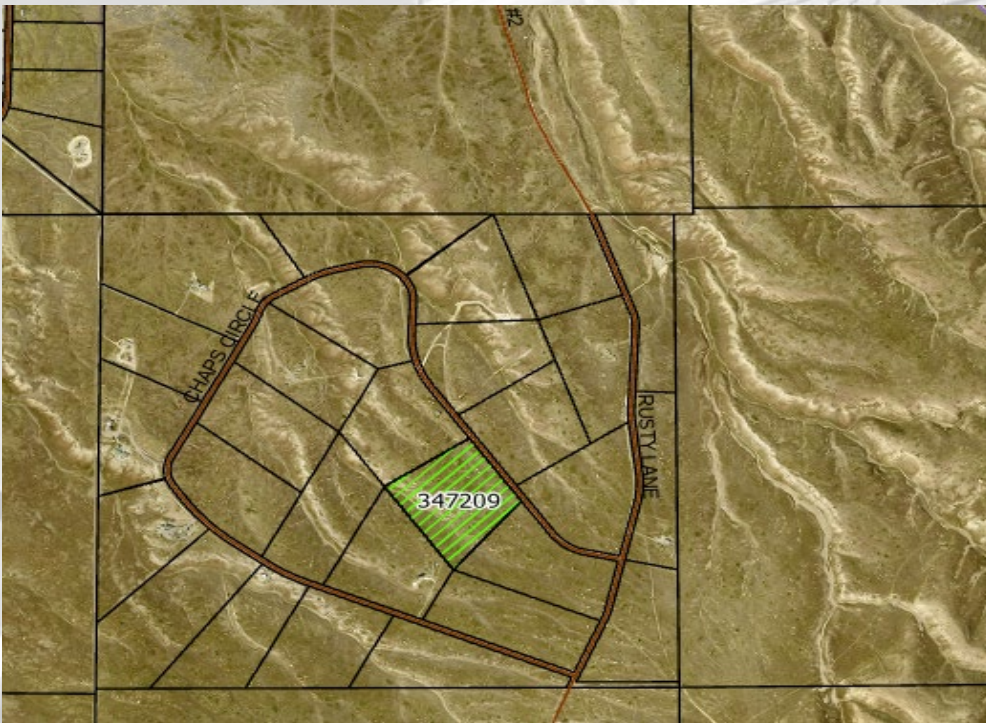
- APN: 003-472-08
- Pioneer Pass #1,2
- 20.43 Acres



Taxes Due and Minimum Bid are subject to change prior to auction

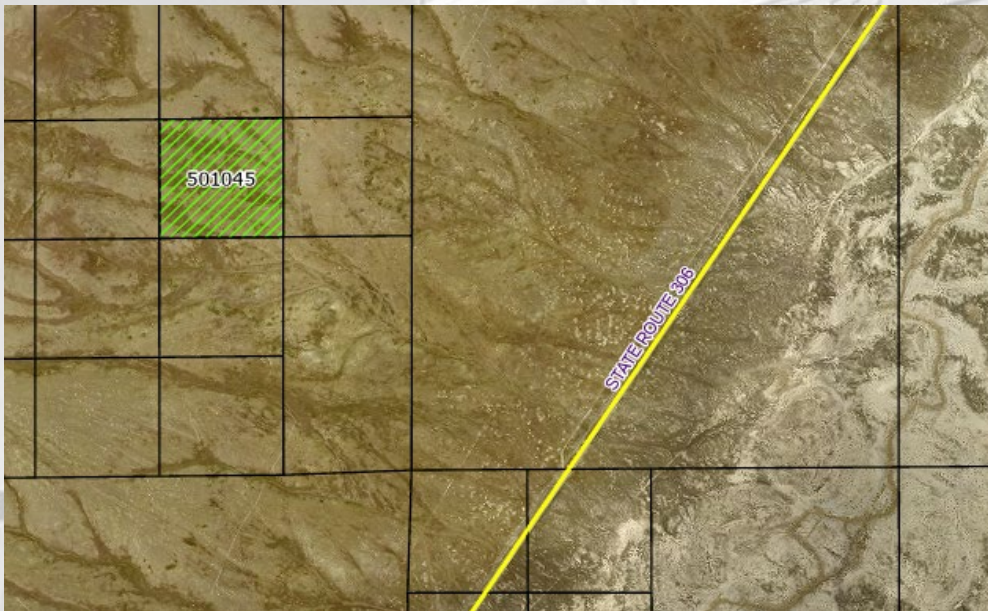


- APN: 003-472-09
- Pioneer Pass #1,2
- 20.74 Acres



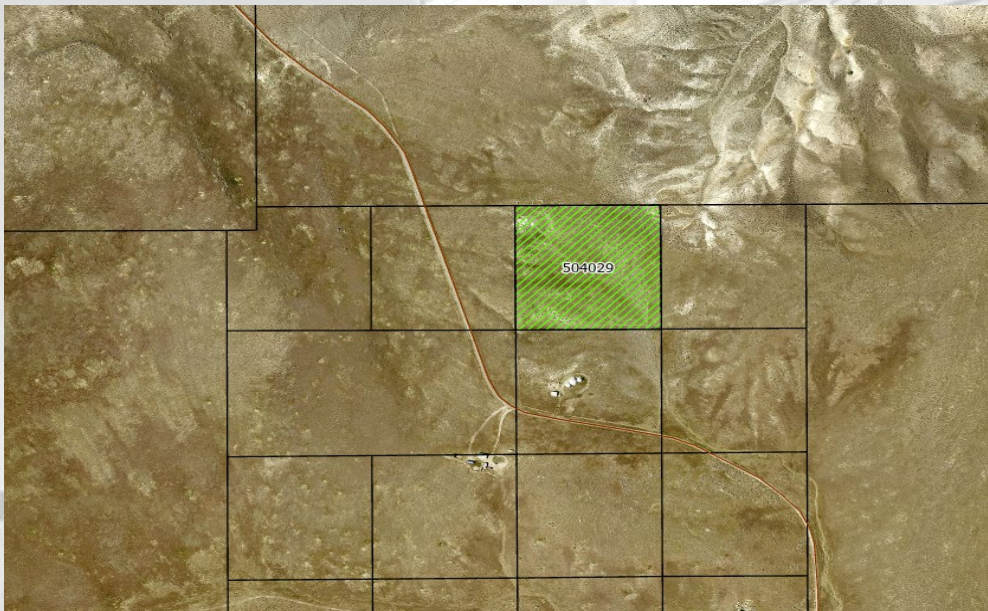
Taxes Due and Minimum Bid are subject to change prior to auction

- APN: 005-010-45
- General County
- 40.00 Acres



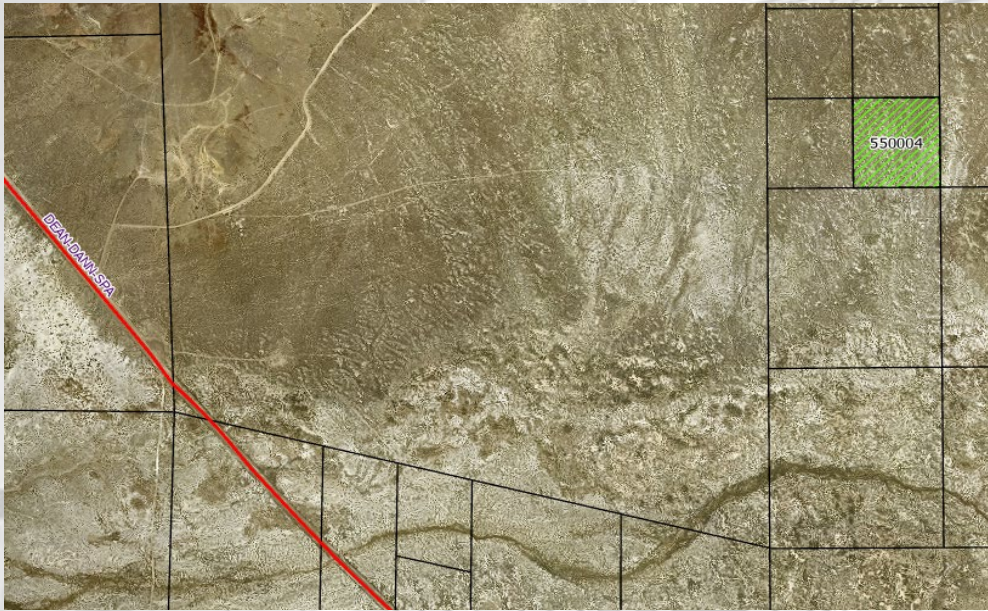
Taxes Due and Minimum Bid are subject to change prior to auction

- APN: 005-040-29
- General County
- 10.00 Acres



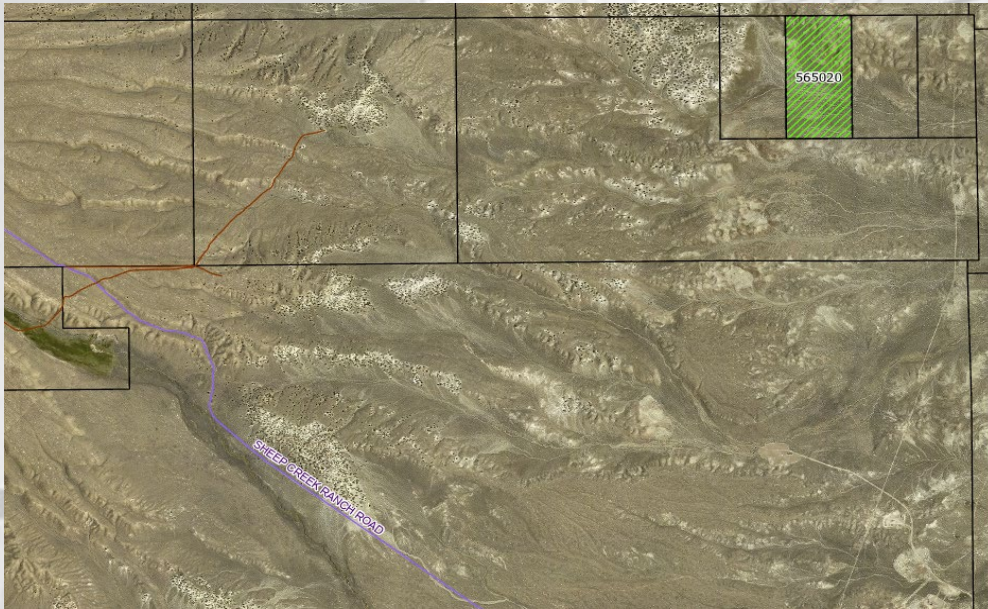
Taxes Due and Minimum Bid are subject to change prior to auction

- APN: 005-500-04
- General County
- 8.02 Acres



Taxes Due and Minimum Bid are subject to change prior to auction

- APN: 005-650-20
- General County
- 80.00 Acres



Taxes Due and Minimum Bid are subject to change prior to auction